

# PAPILLON

BRIDESMAID  
2020



*Tania Olsen*  
DESIGNS



## PAPILLON

TANIA OLSEN DESIGNS 2020 COLLECTION  
BRIDESMAID, BRIDAL, COUTURE AND EVENING GOWNS

*With a vision to craft sophisticated timeless pieces for every occasion,  
Tania Olsen Designs is the culmination of decades in the fashion industry  
and a love of luxurious fabrics and rich colours.*

*From each season's inception, impeccable tailoring brings to life versatile,  
modern interpretations of classic design.*

×

### ORDERS & CONTACT

+61 411 198 025 [sales@taniaolsen.com.au](mailto:sales@taniaolsen.com.au) [taniaolsen.com.au](http://taniaolsen.com.au)  
24/43 Lang Parade, Milton, QLD AUSTRALIA 4064



BRIDESMAID  
2020



BRIDESMAID

*T0827*

×

*Cotton Lace*



SKU T0827

W/S 129.00

SIZES 04 - 30

FT. IN NAVY

Also available in:

 MERLOT	 BLUSH
 DUSTY BLUE	 VINTAGE WHITE

BRIDESMAID

*TO828*

×

*Cotton Lace*



SKU TO828

W/S 129.00

SIZES 04 - 30

FT. IN NAVY

*Also available in:* ● MERLOT ● BLUSH  
● DUSTY BLUE ○ VINTAGE WHITE



BRIDESMAID

*TO829*

×

*Cotton Lace*



SKU TO829

W/S 129.00

SIZES 04 - 30

FT. IN NAVY

Also available in:

<span style="color: #800040;">●</span> MERLOT	<span style="color: #FF6347;">●</span> BLUSH
<span style="color: #4682B4;">●</span> DUSTY BLUE	<span style="color: #FFFFFF;">○</span> VINTAGE WHITE



BRIDESMAID

*TO833*

×

*Georgette*



SKU TO833

W/S 120.00

SIZES 04 - 30

FT. IN LAVENDER

*Also available in:*

- NAVY
- TEAL
- DUSTY BLUE
- DUCK EGG
- PINK
- OYSTER
- MERLOT
- BURNT ORANGE
- MINK
- CHARCOAL
- BLACK
- VINTAGE WHITE
- LAVENDER

BRIDESMAID

*T0834*

×

*Georgette*



SKU T0834

W/S 129.00

SIZES 04 - 30

FT. IN MINK

- Also available in:*
- NAVY
  - TEAL
  - DUSTY BLUE
  - DUCK EGG
  - LAVENDER
  - OYSTER
  - MERLOT
  - BURNT ORANGE
  - PINK
  - CHARCOAL
  - BLACK
  - VINTAGE WHITE



BRIDESMAID

*T0835*

×

*Georgette*



SKU T0835

W/S 139.00

SIZES 04 - 30

FT. IN BURNT ORANGE

- Also available in:*
- NAVY
  - TEAL
  - DUSTY BLUE
  - DUCK EGG
  - PINK
  - OYSTER
  - MERLOT
  - LAVENDER
  - MINK
  - CHARCOAL
  - BLACK
  - VINTAGE WHITE



BRIDESMAID

*TO830*

×

*Stretch Tulle*



SKU TO830

W/S 139.00

SIZES 04 - 30

FT. IN EMERALD

Also available in:

● NAVY	● TEAL	● SKY BLUE	● MINT
● LAVENDER	● BLUSH	● WINE	● CHARCOAL
○ VINTAGE WHITE			



BRIDESMAID

*T0831*

×

*Stretch Tulle*



SKU T0831

W/S 139.00

SIZES 04 - 30

FT. IN LAVENDER

- Also available in:*
- NAVY
  - TEAL
  - SKY BLUE
  - MINT
  - EMERALD
  - BLUSH
  - WINE
  - CHARCOAL
  - VINTAGE WHITE

BRIDESMAID

*T0832*

×

*Stretch Tulle*



SKU T0832

W/S 139.00

SIZES 04 - 30

FT. IN MINT

*Also available in:*

● NAVY	● TEAL	● SKY BLUE	● LAVENDER
● EMERALD	● BLUSH	● WINE	● CHARCOAL
○ VINTAGE WHITE			



BRIDESMAID

*TO844*

×

*Crepe*



SKU TO844

W/S 139.00

SIZES 04 - 30

FT. IN PETAL

Also available in: ● NAVY



BRIDESMAID  
A/W 19

BRIDESMAID

# Brit

×

*A wrapped waist provides a subtle, flattering silhouette to this crepe bridesmaid dress, falling just below the knee.*



SKU TO812

W/S 89.00

SIZES 04 - 30

FT. IN SEA FOAM

Also available in: ● NAVY ● WINE ● PINK

BRIDESMAID

# Nola

×

*A keyhole neck feature crowns this pretty crepe bridesmaid dress, featuring a tie waste and frilled hem sitting just below the knee.*



SKU TO813

W/S 89.00

SIZES 04 - 30

FT. IN NAVY

Also available in:  SEA FOAM  WINE  PINK

BRIDESMAID

# Ruby

×

*Soft frills adorn the neckline and hem of the crepe Ruby dress, with a waist tie drawing the figure to a flattering hourglass.*



SKU TO814

W/S 89.00

SIZES 04 - 30

FT. IN WINE

Also available in: ● NAVY ● PINK ● SEA FOAM

BRIDESMAID

# Hesper

×

*Radiate sophisticated glamour in a floor-length georgette skirt, topped with sweetheart shaped torso over-lay.*



SKU TO815

W/S 129.00

SIZES 04 - 30

FT. IN DUSTY BLUE

Also available in:

- NAVY
- TEAL
- LAVENDER
- DUCK EGG
- PINK
- OYSTER
- MERLOT
- BURNT ORANGE
- MINK
- CHARCOAL
- BLACK
- VINTAGE WHITE

BRIDESMAID

# Freda

×

*Plunging sweetheart bodice held with spaghetti shoulder straps flows through to a breathtaking floor length gown.*



SKU TO816

W/S 129.00

SIZES 04 - 30

FT. IN PINK

Also available in:

- NAVY
- TEAL
- DUSTY BLUE
- DUCK EGG
- LAVENDER
- OYSTER
- MERLOT
- BURNT ORANGE
- MINK
- CHARCOAL
- BLACK
- VINTAGE WHITE

BRIDESMAID

# Delta

×

*Draped soft jersey knit crossing gently at the waist creates the stunning figure of the Delta gown.*



SKU TO826

W/S 119.00

SIZES 04 - 30

FT. IN DUSTY INDIGO

Also available in:

- PINK
- BLUSH
- NAVY
- TEAL
- WINE
- VINTAGE WHITE

BRIDESMAID

# Kalani

×

*Command in the Kalani gown, whose soft jersey knit features a v-neckline, drawn at the waist, finished by a sultry leg split.*



SKU TO817

W/S 139.00

SIZES 04 - 30

FT. IN WINE

Also available in:  PINK  BLUSH  NAVY  TEAL  DUSTY INDIGO  VINTAGE WHITE

BRIDESMAID

# Sabrina

×

*The skirt of the Sabrina gown flows beautifully in a sea of stretch tulle, finished by asymmetric one shoulder detailing.*



SKU TO818

W/S 139.00

SIZES 04 - 30

FT. IN SKY BLUE

- Also available in:
- NAVY
  - TEAL
  - EMERALD
  - MINT
  - LAVENDER
  - BLUSH
  - WINE
  - CHARCOAL
  - VINTAGE WHITE

BRIDESMAID

# Violeta

×

*Feel every bit the princess in the stretch tulle Violeta gown, with spaghetti thin straps holding an adapted sweetheart bodice flowing through to a beautifully feminine skirt.*



SKU TO819

W/S 139.00

SIZES 04 - 30

FT. IN TEAL

- Also available in:
- NAVY
  - TEAL
  - EMERALD
  - MINT
  - LAVENDER
  - BLUSH
  - WINE
  - CHARCOAL
  - VINTAGE WHITE

BRIDESMAID

# Bridget

×

*The soft lace and one shoulder bodice of the Bridget gown is sure to captivate as it cascades into a flowing georgette skirt.*



SKU TO820

W/S 139.00

SIZES 04 - 40

FT. IN TEAL

Also available in:

- NAVY
- BLUSH
- PINK
- OYSTER
- POWDER BLUE
- CHARCOAL
- AUBERGINE
- DUSTY BLUE
- BLACK
- SAGE
- LAVENDER
- COBALT
- WINE
- AQUA
- RASPBERRY
- CORAL
- MULBERRY
- VINTAGE WHITE
- PURE WHITE

BRIDESMAID

# Kassidy

×

*A feminine georgette gown held by a soft halter at the neck, flowing through to a floor length skirt.*



SKU TO821

W/S 129.00

SIZES 04 - 30

FT. IN DUCK EGG

Also available in:

- NAVY
- TEAL
- DUSTY BLUE
- LAVENDER
- PINK
- OYSTER
- MERLOT
- BURNT ORANGE
- MINK
- CHARCOAL
- BLACK
- VINTAGE WHITE

BRIDESMAID

# Sylvia

×

*The layered halter top of the Sylvia gown sits perfectly atop a skirt of flowing georgette.*



SKU TO822

W/S 129.00

SIZES 04 - 30

FT. IN PINK

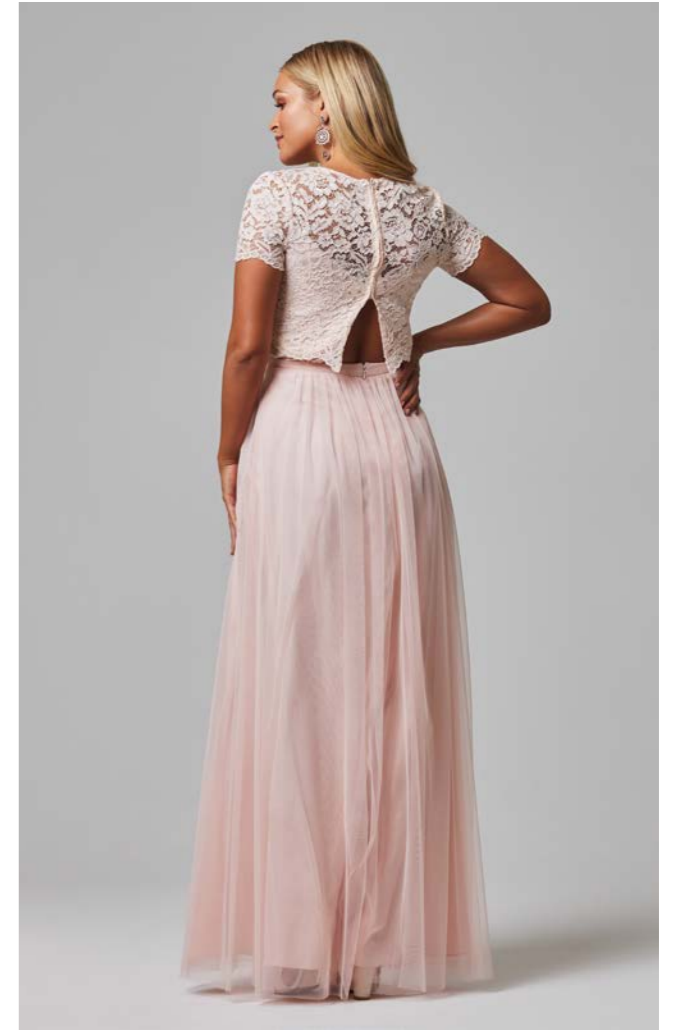
- Also available in:
- NAVY
  - TEAL
  - DUSTY BLUE
  - DUCK EGG
  - LAVENDER
  - OYSTER
  - MERLOT
  - BURNT ORANGE
  - MINK
  - CHARCOAL
  - BLACK
  - VINTAGE WHITE

BRIDESMAID

# Oaklyn

×

*Corded lace forms the capped sleeve bodice of the Oaklyn gown, falling to the floor in a wave of breathtaking tulle.*



SKU TO823

W/S 129.00

SIZES 04 - 30

FT. IN PINK

Also available in:  NAVY  WINE  PALE BLUE

BRIDESMAID

# Shivani

×

*A contemporary long-sleeved gown featuring a scoop neck corded lace bodice and figure hugging stretch jersey skirt.*



SKU TO824

W/S 139.00

SIZES 04 - 30

FT. IN TEAL

Also available in: ● NAVY ● BERRY ● BLUSH

BRIDESMAID

# Valencia

×

*A classic silhouette of georgette, beautifully adorned with top beading.*



SKU TO825

W/S 139.00

SIZES 04 - 30

FT. IN NAVY

Also available in: ● WINE



BRIDESMAID  
S/S 19

BRIDESMAID

# Eloise

×

*The one-shoulder Eloise soft jersey knit dress is balanced by a sultry leg split.*



SKU TO800

W/S 139.00

SIZES 04 - 30

FT. IN BLUSH

Also available in: ● NAVY ● WINE ● PINK ● TEAL ● DUSTY INDIGO ○ VINTAGE WHITE

BRIDESMAID

# Claire

×

*A v-shaped bodice of soft jersey knit cascades into the floor length skirt of the flattering Claire gown.*



SKU TO801

W/S 139.00

SIZES 04 - 30

FT. IN TEAL

Also available in: ● BLUSH ● WINE ● NAVY ● PINK ● DUSTY INDIGO ○ VINTAGE WHITE

BRIDESMAID

# Arianna

×

*This contemporary off the shoulder soft jersey knit gown cascades to a subtle skirt split.*



SKU TO803

W/S 139.00

SIZES 04 - 30

FT. IN WINE

Also available in:  PINK  BLUSH  NAVY   
  TEAL  DUSTY INDIGO  VINTAGE WHITE

BRIDESMAID

# Gloria

×

*This simplicity of the front of this soft jersey knit gown is set off by an eye catching, layered scoop back.*



SKU TO804

W/S 139.00

SIZES 04 - 30

FT. IN TEAL

Also available in:  BLUSH  WINE  NAVY   
  PINK  DUSTY INDIGO  VINTAGE WHITE

BRIDESMAID

# Kelly

×

*A high cross neck is complemented by a slightly wrapped skirt in this calf length, soft jersey dress.*



SKU TO805

W/S 129.00

SIZES 04 - 30

FT. IN DUSTY INDIGO

Also available in: ● NAVY ● WINE ● TEAL ● PINK ● BLUSH ○ VINTAGE WHITE

BRIDESMAID

# Vallaris

×

*The long sleeved Vallaris offers long sleeved coverage of soft lace, set to a flowing georgette skirt.*



SKU TO802

W/S 139.00

SIZES 04 - 40

FT. IN MERLOT

Also available in: ● NAVY ● BLUSH ● PINK ● OYSTER ● POWDER BLUE ● CHARCOAL ● AUBERGINE ● DUSTY BLUE ● BLACK ● SAGE ● LAVENDER ● COBALT ● TEAL ● AQUA ● RASPBERRY ● CORAL ● MULBERRY ○ VINTAGE WHITE ○ PURE WHITE

BRIDESMAID

# Karlee

×

*Lace trim provides a soft, feminine finish to the georgette, keyhole-back Karlee gown.*



SKU TO806

W/S 139.00

SIZES 04 - 40

FT. IN CHARCOAL

Also available in:

- |            |             |                 |              |               |
|------------|-------------|-----------------|--------------|---------------|
| ● NAVY     | ● BLUSH     | ● PINK          | ● OYSTER     | ● POWDER BLUE |
| ● LAVENDER | ● AUBERGINE | ● DUSTY BLUE    | ● BLACK      | ● SAGE        |
| ● COBALT   | ● TEAL      | ● AQUA          | ● RASPBERRY  | ● MULBERRY    |
| ● CORAL    | ● MERLOT    | ○ VINTAGE WHITE | ○ PURE WHITE |               |

BRIDESMAID

# Taliyah

×

*A classic lace trim gown with v-back and flowing georgette skirt.*



SKU TO811

W/S 139.00

SIZES 04 - 40

FT. IN CHARCOAL

Also available in:

- |            |             |                 |              |               |
|------------|-------------|-----------------|--------------|---------------|
| ● NAVY     | ● BLUSH     | ● PINK          | ● OYSTER     | ● POWDER BLUE |
| ● LAVENDER | ● AUBERGINE | ● DUSTY BLUE    | ● BLACK      | ● SAGE        |
| ● COBALT   | ● TEAL      | ● AQUA          | ● RASPBERRY  | ● MULBERRY    |
| ● CORAL    | ● MERLOT    | ○ VINTAGE WHITE | ○ PURE WHITE |               |

BRIDESMAID

# Alora

×

*Caped sleeves float from the plunging v-neck line of the beautiful Alora gown.*



SKU TO809

W/S 120.00

SIZES 04 - 30

FT. IN MERLOT

- Also available in:
- NAVY
  - TEAL
  - DUSTY BLUE
  - DUCK EGG
  - PINK
  - OYSTER
  - LAVENDER
  - BURNT ORANGE
  - MINK
  - CHARCOAL
  - BLACK
  - VINTAGE WHITE

BRIDESMAID

# Sariyah

×

*The Sariyah georgette pant suit is a perfect choice for a contemporary bridal party.*



SKU TO808

W/S 145.00

SIZES 04 - 30

FT. IN TEAL

- Also available in:
- NAVY
  - LAVENDER
  - DUSTY BLUE
  - DUCK EGG
  - PINK
  - OYSTER
  - MERLOT
  - BURNT ORANGE
  - MINK
  - CHARCOAL
  - BLACK
  - VINTAGE WHITE

BRIDESMAID

# Lucia

×

*The striking Lucia gown features stretch jersey knit, tapered down one side into a daring side split.*



SKU TO810  
SIZES 04 - 30  
FT. IN NAVY

W/S 139.00

Also available in: ● BERRY ● SEA MIST ● TEAL ● BLUSH

BRIDESMAID

# Libby

×

*A mermaid style skirt echoes split circle sleeve detailing in the stretch jersey knit Libby gown.*



SKU TO807  
SIZES 04 - 30  
FT. IN SEA MIST

W/S 139.00

Also available in: ● BERRY ● NAVY ● TEAL ● BLUSH

BRIDESMAID

# Petra

×

*Luxe jersey knit provides the perfect texture for the opulent Petra pant wrap.*



SKU PO31P

W/S 115.00

SIZES S - M - L

FT. IN TEA ROSE

Also available in: ● NAVY ● RED ● BLACK ● BLUSH ● MERLOT

BRIDESMAID

# Liana

×

*Corded lace & jersey - continued style.*



SKU TO777

W/S 139.00

SIZES 04 - 40

FT. IN BERRY

Also available in: ● BLUSH ● TEAL ● NAVY

BRIDESMAID

# Jaquelyn

×

*Corded lace & jersey - continued style.*



SKU TO778

W/S 139.00

SIZES 04 - 40

FT. IN NAVY

Also available in: ● BLUSH ● BERRY ● TEAL

BRIDESMAID

# Malissa

×

*Jersey - continued style.*



SKU TO779

W/S 139.00

SIZES 04 - 30

FT. IN TEAL

Also available in: ● BLUSH ● BERRY ● NAVY

BRIDESMAID

# Bonita

×

*Stretch tulle - continued style.*



SKU TO71

W/S 139.00

SIZES 04 - 40

FT. IN WINE

*Also available in:*

- NAVY
- TEAL
- SKY BLUE
- MINT
- LAVENDER
- BLUSH
- EMERALD
- CHARCOAL
- VINTAGE WHITE

BRIDESMAID

# Bianca

×

*Soft jersey knit - continued style.*



SKU TO72

W/S 139.00

SIZES 04 - 30

FT. IN BLUSH

*Also available in:*

- VINTAGE WHITE
- PINK
- WINE
- DUSTY INDIGO
- NAVY
- TEAL

BRIDESMAID

# Sandra

×

*Soft jersey knit - continued style.*



SKU TO76

W/S 139.00

SIZES 04 - 30

FT. IN DUSTY INDIGO

Also available in: ○ VINTAGE WHITE ● BLUSH ● PINK ● WINE  
● PURPLE ● NAVY ● TEAL

BRIDESMAID

# Amber

×

*Stretch tulle - continued style.*



SKU TO74

W/S 139.00

SIZES 04 - 40

FT. IN WINE

Also available in: ● NAVY ● TEAL ● SKY BLUE ● MINT  
● LAVENDER ● BLUSH ● EMERALD ● CHARCOAL  
○ VINTAGE WHITE

BRIDESMAID

# Bella

×

Soft lace - continued style.



SKU TO60

W/S 139.00

SIZES 04 - 40

FT. IN NAVY

Also available in:

- VINTAGE WHITE
- PURE WHITE
- BLUSH
- CORAL
- PINK
- POWDER BLUE
- DUSTY BLUE
- OYSTER
- LAVENDER
- AUBERGINE
- MERLOT
- SAGE
- AQUA
- TEAL
- COBALT
- RASPBERRY
- MULBERRY
- CHARCOAL
- BLACK

BRIDESMAID

# Harper

×

Soft stretch lace. TOBRI - belt sold separately. Continued style.



SKU TO66

W/S 139.00

SIZES 04 - 30

FT. IN VINTAGE WHITE

Also available in:

- OYSTER
- BLUSH
- NAVY
- WINE

BRIDESMAID

# Nikita

×

Soft lace - continued style.



SKU T069

W/S 139.00

SIZES 04 - 40

FT. IN PINK

- Also available in:
- VINTAGE WHITE
  - PURE WHITE
  - BLUSH
  - CORAL
  - RASPBERRY
  - POWDER BLUE
  - DUSTY BLUE
  - OYSTER
  - LAVENDER
  - AUBERGINE
  - MERLOT
  - SAGE
  - AQUA
  - TEAL
  - COBALT
  - NAVY
  - MULBERRY
  - CHARCOAL
  - BLACK

BRIDESMAID

# Phoebe

×

Soft lace - continued style.



SKU T057

W/S 139.00

SIZES 04 - 40

FT. IN MERLOT

- Also available in:
- VINTAGE WHITE
  - PURE WHITE
  - BLUSH
  - CORAL
  - PINK
  - POWDER BLUE
  - DUSTY BLUE
  - OYSTER
  - LAVENDER
  - RASPBERRY
  - AUBERGINE
  - SAGE
  - AQUA
  - TEAL
  - COBALT
  - NAVY
  - MULBERRY
  - CHARCOAL
  - BLACK

BRIDESMAID

Anais

×

Soft lace - continued style.



SKU TO48

W/S 139.00

SIZES 04 - 40

FT. IN PINK

- Also available in:
- VINTAGE WHITE
  - PURE WHITE
  - BLUSH
  - CORAL
  - RASPBERRY
  - POWDER BLUE
  - DUSTY BLUE
  - OYSTER
  - LAVENDER
  - AUBERGINE
  - MERLOT
  - SAGE
  - AQUA
  - TEAL
  - COBALT
  - NAVY
  - MULBERRY
  - CHARCOAL
  - BLACK

BRIDESMAID

Camilla

×

Soft lace - continued style.



SKU TO37

W/S 139.00

SIZES 04 - 40

FT. IN AUBERGINE

- Also available in:
- VINTAGE WHITE
  - PURE WHITE
  - BLUSH
  - CORAL
  - PINK
  - POWDER BLUE
  - DUSTY BLUE
  - OYSTER
  - LAVENDER
  - RASPBERRY
  - MERLOT
  - SAGE
  - AQUA
  - TEAL
  - COBALT
  - NAVY
  - MULBERRY
  - CHARCOAL
  - BLACK

BRIDESMAID

*Charlotte*

×

*Soft lace - continued style.*



SKU PO34

W/S 139.00

SIZES 04 - 40

FT. IN OYSTER

*Also available in:*

- |                                     |                                  |                                |                                 |                              |
|-------------------------------------|----------------------------------|--------------------------------|---------------------------------|------------------------------|
| <input type="radio"/> VINTAGE WHITE | <input type="radio"/> PURE WHITE | <input type="radio"/> BLUSH    | <input type="radio"/> CORAL     | <input type="radio"/> PINK   |
| <input type="radio"/> POWDER BLUE   | <input type="radio"/> DUSTY BLUE | <input type="radio"/> LAVENDER | <input type="radio"/> RASPBERRY | <input type="radio"/> MERLOT |
| <input type="radio"/> AUBERGINE     | <input type="radio"/> SAGE       | <input type="radio"/> AQUA     | <input type="radio"/> TEAL      | <input type="radio"/> COBALT |
| <input type="radio"/> NAVY          | <input type="radio"/> MULBERRY   | <input type="radio"/> CHARCOAL | <input type="radio"/> BLACK     |                              |

BRIDESMAID

*Olivia*

×

*Soft lace - continued style.*



SKU PO34A

W/S 139.00

SIZES 04 - 40

FT. IN AUBERGINE

*Also available in:*

- |                                     |                                  |                                |                                |                                 |
|-------------------------------------|----------------------------------|--------------------------------|--------------------------------|---------------------------------|
| <input type="radio"/> VINTAGE WHITE | <input type="radio"/> PURE WHITE | <input type="radio"/> BLUSH    | <input type="radio"/> CORAL    | <input type="radio"/> PINK      |
| <input type="radio"/> POWDER BLUE   | <input type="radio"/> DUSTY BLUE | <input type="radio"/> OYSTER   | <input type="radio"/> LAVENDER | <input type="radio"/> RASPBERRY |
| <input type="radio"/> MERLOT        | <input type="radio"/> SAGE       | <input type="radio"/> AQUA     | <input type="radio"/> TEAL     | <input type="radio"/> COBALT    |
| <input type="radio"/> NAVY          | <input type="radio"/> MULBERRY   | <input type="radio"/> CHARCOAL | <input type="radio"/> BLACK    |                                 |

BRIDESMAID

*Sammy*

×

*Tulle multi-way dress - continued style.*



SKU PO75

W/S 139.00

SIZES 04 - 30

FT. IN LAVENDER

Also available in:

<span style="color: #f8766d;">●</span> BLUSH	<span style="color: #c00000;">●</span> WINE	<span style="color: #993366;">●</span> TEA ROSE	<span style="color: #33cccc;">●</span> MINT
<span style="color: #000080;">●</span> NAVY	<span style="color: #666666;">●</span> SLATE	<span style="color: #ffffff;">○</span> PURE WHITE	

BRIDESMAID

*Wrap Dress Set*

×

*Stretch jersey with matching bandeau top - continued style.*



SKU PO31

W/S 115.00 PRINT 125.00

SIZES S - M - L

FT. IN FLORAL PRINT

Also available in:

<span style="color: #f8766d;">●</span> PEARL BLUSH	<span style="color: #f8766d;">●</span> BLUSH	<span style="color: #993366;">●</span> TEA ROSE	<span style="color: #ff0000;">●</span> RED
<span style="color: #800040;">●</span> MERLOT	<span style="color: #6699cc;">●</span> DUSTY BLUE	<span style="color: #ccccff;">●</span> LILAC	<span style="color: #660099;">●</span> PURPLE
<span style="color: #008000;">●</span> EMERALD	<span style="color: #000080;">●</span> NAVY	<span style="color: #0000ff;">●</span> COBALT	<span style="color: #00cccc;">●</span> AQUA
<span style="color: #804020;">●</span> MOCHA	<span style="color: #cccccc;">●</span> PLATINUM	<span style="color: #666666;">●</span> CHARCOAL	<span style="color: #000000;">●</span> BLACK

BRIDESMAID

# Latitia

×

*Corded lace & silk chiffon - continued style.*



SKU TO16

W/S 149.95

SIZES 04 - 30

FT. IN DUSTY BLUE

*Also available in:*

- BLUSH
- BERRY
- LILAC
- NAVY
- TEAL
- VINTAGE WHITE

BRIDESMAID

# Paris

×

*Tulle - continued style.*



SKU PO73

W/S 139.00

SIZES 04 - 30

FT. IN NAVY

*Also available in:*

- BLUSH
- WINE
- TEA ROSE
- MINT
- LAVENDER
- SLATE
- PURE WHITE

BRIDESMAID

*Sophia*

×

*Cotton lace - continued style.*



SKU TO41

W/S 139.00

SIZES 04 - 30

FT. IN NAVY

*Also available in:*

- PINK
- BLUSH
- DUSTY INDIGO
- TEAL
- WINE
- VINTAGE WHITE

BRIDESMAID

*Harlowe*

×

*Soft lace - continued style.*



SKU PO33

W/S 139.00

SIZES 04 - 40

FT. IN DUSTY BLUE

*Also available in:*

- VINTAGE WHITE
- PURE WHITE
- BLUSH
- CORAL
- PINK
- POWDER BLUE
- OYSTER
- LAVENDER
- AUBERGINE
- RASPBERRY
- MERLOT
- SAGE
- AQUA
- TEAL
- COBALT
- NAVY
- MULBERRY
- CHARCOAL
- BLACK

### WOMENS DRESS SIZE CHART IN INCHES

SIZE	6	8	10	12	14	16	18	20	22
BUST	31"	33"	35"	37"	39"	41"	43"	45"	47"
WAIST	24.5"	26.5"	28.5"	30.5"	32.5"	34.5"	36.5"	38.5"	40.5"
HIP	35.5"	37.5"	39.5"	41.5"	43.5"	45.5"	47.5"	49.5"	51.5"

SIZE	24	26	28	30	32	34	36	38	40
BUST	49"	51"	53"	55"	57"	59"	61"	63"	64"
WAIST	43"	45"	47"	49"	51"	53"	55"	57"	59"
HIP	53"	55"	57"	59"	61"	63"	65"	67"	69"

### WOMENS DRESS SIZE CHART IN CM

SIZE	6	8	10	12	14	16	18	20	22
BUST	79cm	84cm	89cm	94cm	99cm	104cm	109cm	114cm	119cm
WAIST	62cm	67cm	72cm	77cm	82cm	87cm	93cm	98cm	103cm
HIP	90cm	95cm	100cm	105cm	110cm	115cm	120cm	125cm	130cm

SIZE	24	26	28	30	32	34	36	38	40
BUST	124cm	129cm	134cm	139cm	144cm	149cm	154cm	159cm	164cm
WAIST	109cm	114cm	119cm	124cm	129cm	134cm	139cm	144cm	149cm
HIP	135cm	140cm	145cm	150cm	155cm	160cm	165cm	170cm	175cm

### BELTS Ribbon available in:

- VINTAGE WHITE
- PURE WHITE
- NAVY



TO-BA-1  
W/S 19.95 RRP 54.95  
TO-BR-1 (WITH RIBBON)  
W/S 34.95 RRP 89.95



TO-BA-2  
W/S 19.95 RRP 54.95  
TO-BR-2 (WITH RIBBON)  
W/S 34.95 RRP 89.95



TO-BA-3  
W/S 19.95 RRP 54.95  
TO-BR-3 (WITH RIBBON)  
W/S 34.95 RRP 89.95



TO-BA-4  
W/S 19.95 RRP 54.95  
TO-BR-4 (WITH RIBBON)  
W/S 34.95 RRP 89.95



TO-BA-5  
W/S 24.95 RRP 69.95  
TO-BR-5 (WITH RIBBON)  
W/S 39.95 RRP 99.95



TO-BA-6  
W/S 12.95 RRP 29.95  
TO-BR-6 (WITH RIBBON)  
W/S 29.95 RRP 69.95



TO-BA-7  
W/S 12.95 RRP 29.95  
TO-BR-7 (WITH RIBBON)  
W/S 29.95 RRP 69.95



TO-BA-8  
W/S 12.95 RRP 29.95  
TO-BR-8 (WITH RIBBON)  
W/S 29.95 RRP 69.95



TO-BA-9  
W/S 12.95 RRP 29.95  
TO-BR-9 (WITH RIBBON)  
W/S 29.95 RRP 69.95



TO-BA-10  
W/S 12.95 RRP 29.95  
TO-BR-10 (WITH RIBBON)  
W/S 29.95 RRP 69.95



*Tania Olsen*  
DESIGNS

TANIAOLSEN.COM.AU