

RAW by RAW



A/W
"20
collection



ABOUT:

RAW by RAW is the latest arm of a family of leather crafting and tailoring established in 1976, the brand represents four generations of industry experience. The Balsim family have utilised this experience and expertise to become industry leaders, with a reputation cultivated from working with Australia's leading fashion houses and designers.

While the family business have always been seen as innovators in leather garment manufacturing and design they also understand the need to evolve and move with the needs and wants of their clientele and the ever changing fashion word trends. As a result with a refined style RAW by RAW are timeless pieces that can be incorporated into any wardrobe from day to night.

RAW BY RAW has quickly gained a reputation for its forward thinking, attention to detail and outstanding tailoring. Incorporating European Yarn knits, Australian knitted jerseys, accompanied with its signature premium Italian leather pieces fully hand-crafted in by experienced artisans in Melbourne, Australia as well as woven must haves.

Utilising only the highest quality fabrics, leathers and suedes from home and abroad, and teamed with a highly skilled design team, RAW BY RAW is fashion forward thinking.

RAW BY RAW is always fresh fashion.

Our Leather:

The Balsim family through its European roots have sustained relationships with leading Italian Tanneries going back generations – in decades or trading and hand-crafting only working with the best that the world has to offer Quality Ethical Production is the main code of conduct that in imbedded into the companies ethos.

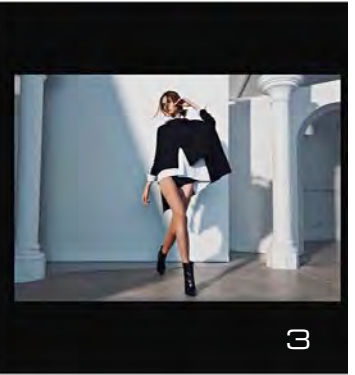
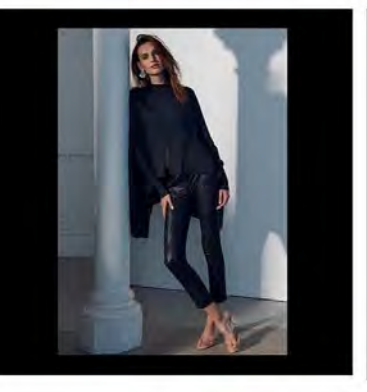
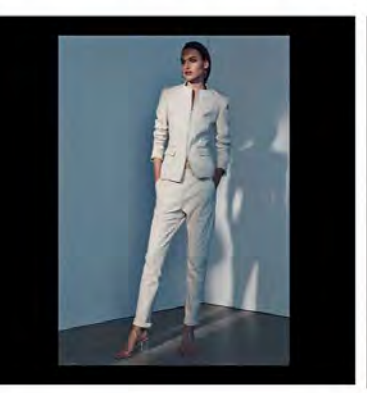
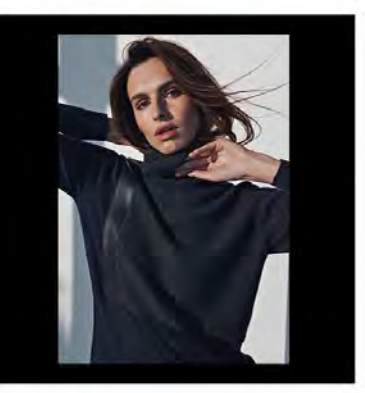
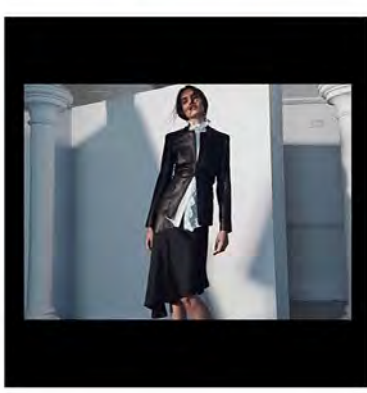
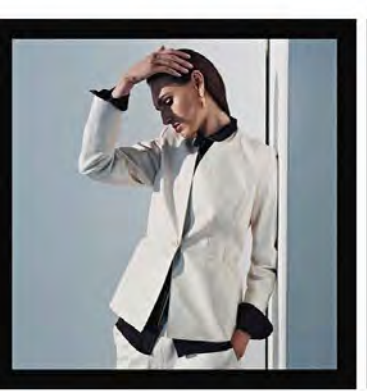
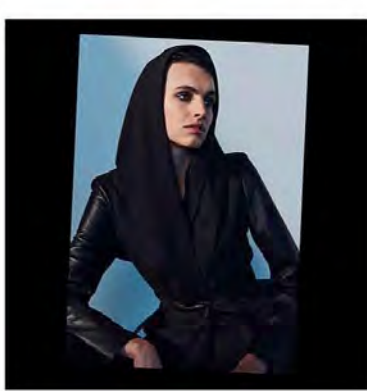
All our leather is tanned in Italy in regions that have been known for the tanning of leather since Roman Times. All our leather suppliers (tanneries) have passed on their knowledge to new generations whilst employing new technology to advance quality, become increasingly environmentally friendly and sustainable.

All tanneries have approved water treatment plants as endorsed by the Italian Government and all skins are approved animal bi-products. All tanneries are quality assured and employ ethical production principles to all components of the leather production process. Due to this we work with Italian Leather Suppliers endorsed by the "Unione Nazionale Industria Conceria" the "National Union of Tanneries of Italy" and all our tanneries have "ISO" accreditation.

Our Fabrics and Yarns

RAW by RAW strives to source the finest quality natural fibre fabrics from home and abroad. Sourcing only the finest quality fabric in wool, modal, silk and cotton from local Australian textiles houses and our amazing suppliers in Italy that employ the use of fine quality Australian Wool.

Equally as is our company principle all fabrics are sourced from ethical and sustainable suppliers that employ environmentally friendly and sustainable methods in knitting, spinning and milling our fabrics/yarns.





Iceberg Front
(no snood)



Iceberg Back
(no snood)



Coco Front
(with snood)



Coco Back
(no snood)

Iceberg Front



Jet Front
(with snood)



Jet Back
(no snood)



Style: Cassandra
Code: RW20-01
Sizes: 1-2-3-4-5
W/Sale +gst: \$136.00

australian merino wool blend with
italian lambskin leather trim



Coco Front



Coco Back



Iceberg Front



Iceberg Back

Style: Di Rivoli
Code: RW20-02
Sizes: 1-2-3-4-5
W/Sale +gst: \$132.00
australian merino wool blend with
italian lambskin leather trim





Iceberg Front



Iceberg Back



Coco Front



Coco Back

Style: South Yarra
Code: RW20-03
Sizes: 1-2-3-4-5
W/Sale +gst: \$114.00
australian merino wool blend





Jet Front



Jet Back



Coco



Iceberg

Style: Newcastle

Code: RW20-11

Sizes: S-M-L-XL

W/Sale +gst: \$157.00

australian merino wool blend with
italian lambskin leather trim





Iceberg Front



Iceberg Back



Coco



Jet

Style: St. Kilda
Code: RW20-05
Sizes: S-M-L-XL
W/Sale +gst: \$125.00
australian merino wool blend





Jet Front



Jet Back



Snow White
-



Snow White
Back

Style: Kaye
Code: RW20-07
Sizes: 0-1-2-3-4-5
W/Sale +gst: \$128.00

australian merino wool blend with
italian lambskin leather trim





Snow White Front



Snow White Back



Jet Front



Jet Back

Style: Aurora
Code: RW20-09
Sizes: 0-1-2-3-4-5
W/Sale +gst: \$124.00

australian merino wool blend with
italian lambskin leather trim





Machiato Front



Machiato Back



Iceberg



Snow White

Style: Fitzroy
Code: RW20-04
Sizes: 0-1-2-3-4-5
W/Sale +gst: \$120.00
premium wool & mohair blend
european yarn





Snow White Back

Snow White Front



Iceberg



Machiato

Style: Bastion
Code: RW20-06
Sizes: 0-1-2-3-4-5
W/Sale +gst: \$125.00
premium wool & mohair blend
european yarn







Machiato Front



Machiato Back



Jet Front



Jet Back

Style: Carlisle
Code: RW20-10
Sizes: S-M-L-XL
W/Sale +gst: \$136.00
australian merino fluffy wool blend



Jet Front



Jet Back



Machiato Front



Machiato Back

Style: Ashmore
Code: RW20-12
Sizes: S-M-L-XL
W/Sale +gst: \$125.00
australian merino fluffy wool blend



Jet Front



Jet Back



Iceberg Front



Iceberg Back

Style: Sofia
Code: RW20-08
Sizes: 0-1-2-3-4-5
W/Sale +gst: \$145.00
silk, cashmere and wool blend yarn
with italian lambskin leather







White Front



White Back



White Front



White Back

Style: Sheridan
Code: RW20-13
Sizes: 0-1-2-3-4-5
W/Sale +gst: \$82.00
italian cotton poplin fabric
made in australia

Style: Parisian Shirt
Code: RW20-14
Sizes: 0-1-2-3-4-5
W/Sale +gst: \$153.00
pure sand washed silk
made in australia



Jet Front



Jet Back



Jet Front



Jet Back

Style: Isabelle
 Code: RW20-15
 Sizes: 0-1-2-3-4-5
 W/Sale +gst: \$132.00
 silky cupro & italian lambskin leather
 made in australia

Style: Londoner Shirt
 Code: RW20-16
 Sizes: 0-1-2-3-4-5
 W/Sale +gst: \$132.00
 silky cupro & italian lambskin leather
 made in australia





Jet Front



Jet Back



Jet Front



Jet Back

Style: Tulip Top
 Code: RW20-17
 Sizes: 0-1-2-3-4-5
 W/Sale +gst: \$135.00
 silky cupro & italian lambskin leather
 made in australia

Style: Monaco Shirt
 Code: RW20-18
 Sizes: 0-1-2-3-4-5
 W/Sale +gst: \$153.00
 silky cupro & italian lambskin leather
 made in australia





Stone Front



Stone Back



Jet Front



Jet Back



Jet Front



Jet Back

Style: Tiana Coat
Code: RW20-TIANA-CT
Sizes: 1-2-3-4-5
W/Sale +gst: \$215.00

italian wool & cashmere fabric
italian lambskin leather trim
made in australia

Style: Naomi Jacket
Code: RW20-NAOMI-JKT
Sizes: 1-2-3-4-5
W/Sale +gst: \$178.00

stretch crepe - italian fabric
italian lambskin leather trim
made in australia





Jet Front



Jet Back



Stone



French Navy

Style: Sentier Pant
Code: RW19-SENTIER-PN
Sizes: 0-1-2-3-4-5
W/Sale +gst: \$120.00
european stretch \\
with italian lambskin
made in austra



Jet Front



Jet Back



Stone



French Navy

Style: Byron Jogger Pant
Code: RW19-BYRON-PN
Sizes: 0-1-2-3-4-5
W/Sale +gst: \$132.50
european stretch \\
with italian lambskin
made in austra



Navy Front



Navy Back



Jet Front



Jet Front



Jet Back



Jet Back

Style: Hugo Pant
Code: RW20-HUGO-PNT
Sizes: 0-1-2-3-4-5
W/Sale +gst: \$175.00

italian knit stretch ponte
with italian lambskin leather
made in australia

Style: Frankie Jooger Pant
Code: RW20-FRANKIE-PNT
Sizes: 0-1-2-3-4-5
W/Sale +gst: \$195.00

italian knit stretch ponte
with italian lambskin leather
made in australia

Also available in:
Chocolate & Stone Colours





Stone Front



Stone Back



Jet Front



Jet Back

Style: Dianne Pant
 Code: RW20-ROLLIE-PNT
 Sizes: 0-1-2-3-4-5
 W/Sale +gst: \$300.00
 italian lambskin leather
 made in australia
 Also available in:
 Chocolate, Navy & Black Diamond Colours

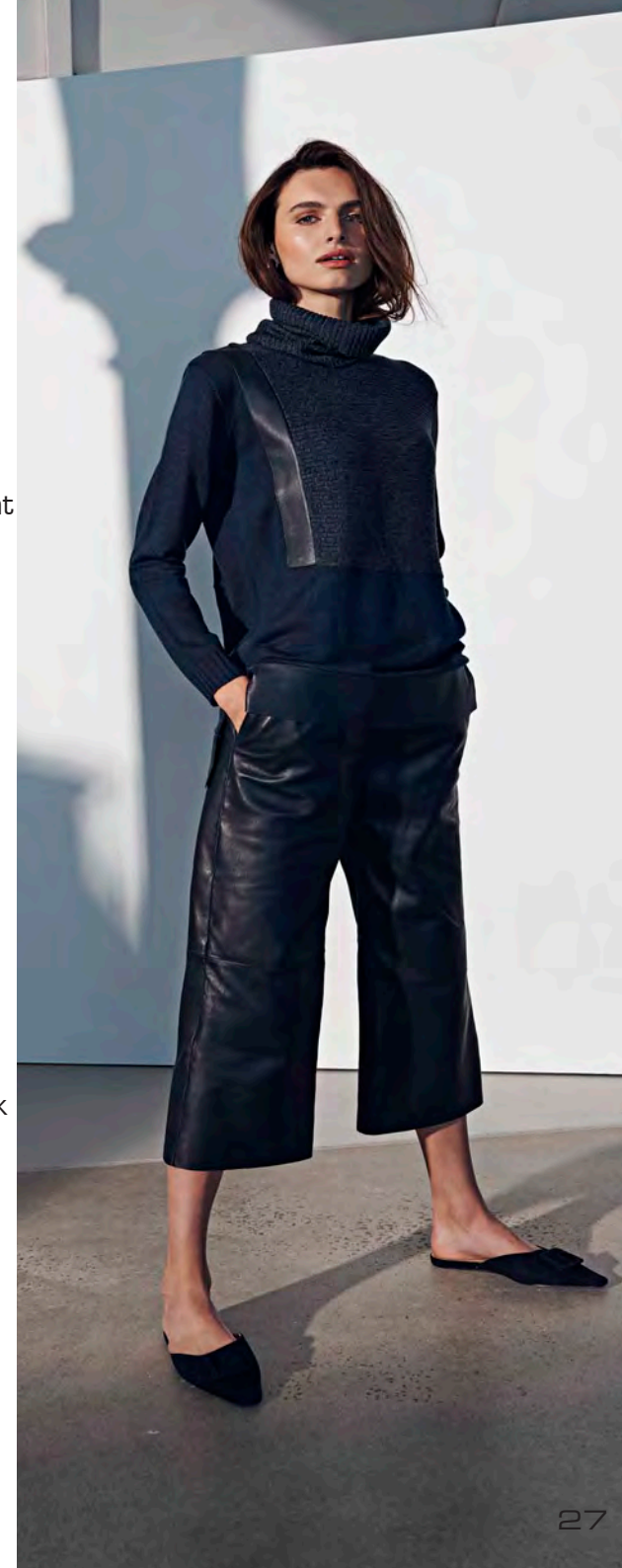


Jet Front



Jet Back

Style: York Culottes
 Code: RW20-YORK-PNT
 Sizes: 0-1-2-3-4-5
 W/Sale +gst: \$310.00
 italian lambskin leather
 made in australia
 Also available in:
 Chocolate, French Navy,
 Winter White & Black Diamond Colours





Style: Penelope Skirt
Code: RW20-PEN-SKT

Sizes: 0-1-2-3-4-5
W/Sale +gst: \$187.00

italian stretch satin crepe
with italian lambskin leather
made in australia





Jet Front



Jet Back

Style: Stanton Jacket
Code: RW20-STANTON-JKT
Sizes: 0-1-2-3-4-5

W/Sale +gst: \$310.00

italian lambskin leather
made in australia

Also available in:
Chocolate, French Navy, Stone
and Winter White





Jet Front



Jet Back



Winter White



Stone

Style: Grace Jacket
Code: RW20-GRACE-JKT
Sizes: 0-1-2-3-4-5

W/Sale +gst: \$290.00

italian lambskin leather
made in australia

Also available in:
French Navy





Navy Front



Navy Back



Jet Front



Jet Back

Style: Grace Coat
Code: RW20-GRACE-CT
Sizes: 0-1-2-3-4-5
W/Sale +gst: \$345.00

italian lambskin leather
made in australia
Also available in:
Chocolate & Winter White





Chocolate Front



Chocolate Back

Style: Mara Coat
Code: RW20-MARA-CT
Sizes: 0-1-2-3-4-5

W/Sale +gst: \$355.00

italian lambskin leather
made in australia

Also available in:
Jet Black, French Navy, Stone
and Winter White





Style: Dianne Jacket
Code: RW20-DIANNE-JKT

Sizes: 0-1-2-3-4-5
W/Sale +gst: \$350.00

italian lambskin leather
made in australia

Also available in: Jet Black (Nappa), Stone
Chocolate, French Navy & Winter White



RAW by RAW



A Division of Hobart Australia Pty. Ltd.
HQ: 1236 Glenhuntly Road, Glenhuntly
VICTORIA, Australia, 3163
T: +61 (03) 9571 0531 E: info@rawbyraw.com

rawbyraw.com